

SANITARY SEWER REHABILITATION

BRIDGESTONE MUNICIPAL UTILITY DISTRICT | UPCOMING PROJECT IN YOUR AREA

WWW.BRIDGESTONEMUD.COM





BOARD OF DIRECTORS

Michael Crayton
Martha Gutierrez
David Berry
Mikuel K. Draper
Martha Velazquez

DISTRICT ATTORNEY


Jon Polley


 jon@polleygarza.com

 346-440-1296

DISTRICT OPERATOR


Danny Staab


 dstaab@wdmtexas.com

 281-353-9809


DISTRICT ENGINEERS


Joshua P. Lee, PE

 jlee@quiddity.com

 281-363-4039

Ryan T. Schilhab, PE

 rschilhab@quiddity.com

 281-363-4039

Please contact a District Engineer, Joshua Lee and/or Ryan Schilhab, with any questions regarding this project.

IMPORTANT ANNOUNCEMENTS

This newsletter aims to inform the Bridgestone MUD (The District) residents within the Bridgestone and Bridgestone West subdivisions that a sanitary sewer rehabilitation project is scheduled to begin construction in January 2024.

Sanitary sewer collection systems are critical infrastructure that transports wastewater from residential homes and commercial businesses to wastewater treatment plants. The proper functioning of these systems is crucial for public health and environmental protection. The public sanitary sewer system in the Bridgestone and Bridgestone West subdivisions was installed in the late 1970s and early 1980s. As sanitary sewer lines age, they become more susceptible to cracking, root infiltration, grease buildup, offsets, sags, etc. Over the last five years, the District has taken a phased approach to clean, televise, and identify deficiencies within the sanitary sewer system. Proactive rehabilitation reduces the likelihood of system failures such as sewer backups, overflows, and collapses.

This project will consist of repairing and rehabilitating the aging and damaged sanitary sewer lines, leads, clean-outs, and manholes within the Bridgestone and Bridgestone West subdivisions. Enclosed is a copy of an exhibit that shows the areas that will be impacted by the project. The project's first phase is currently in design and intended to rehabilitate the sanitary sewer trunklines that feed into the District's wastewater treatment plant. In the future, we will proceed with two other phases of the project, which will rehabilitate the more minor repairs of the sanitary sewer system. Residents will be notified several times before the contractor mobilizes.

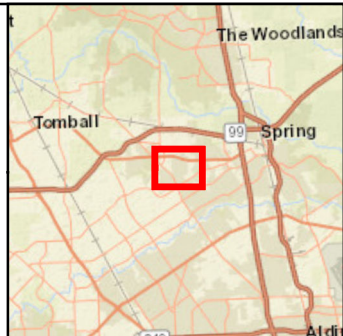
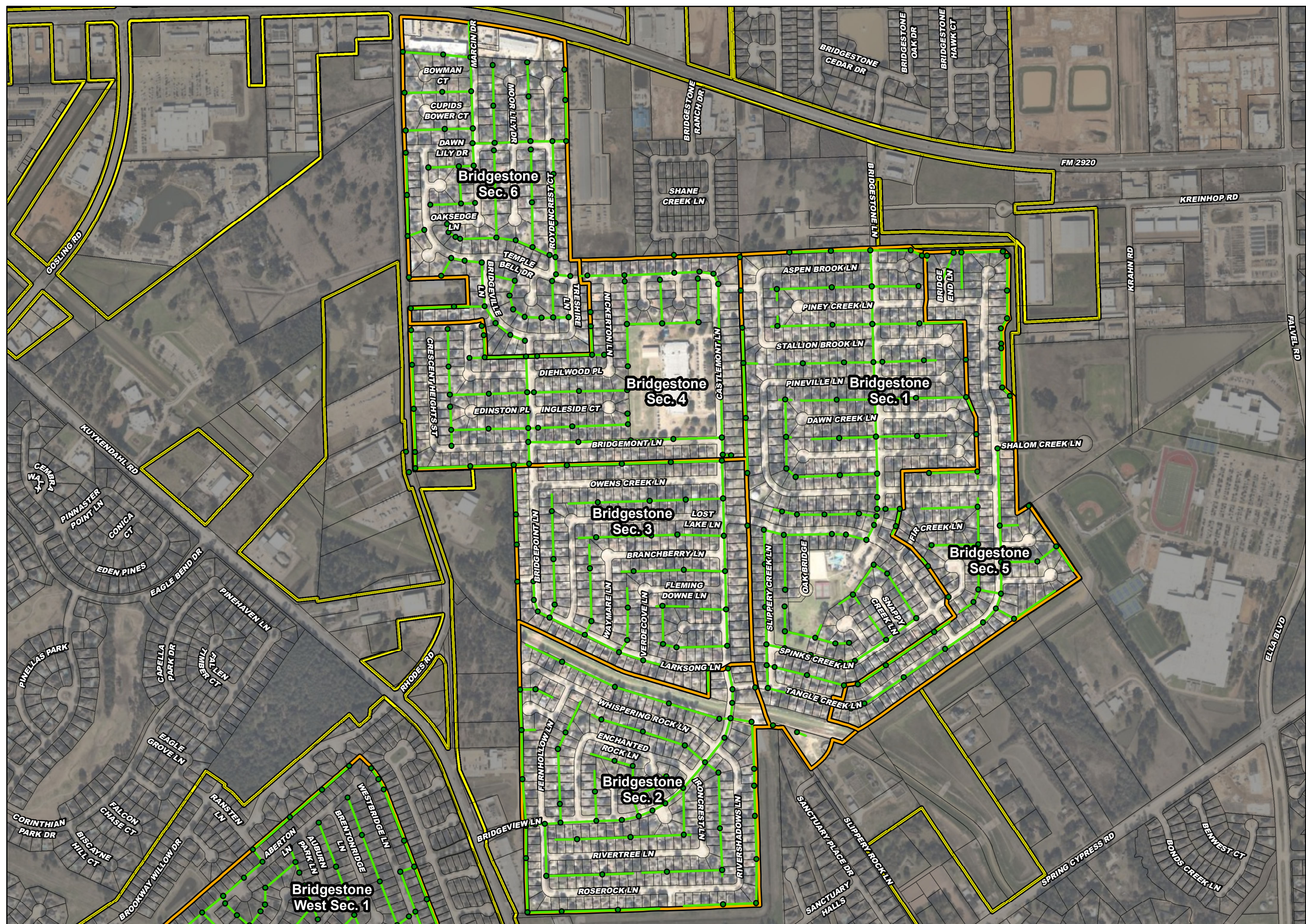
FREQUENTLY ASKED QUESTIONS

When will I be affected?

- The project is in the design phase, and construction for the first phase is anticipated to begin in January 2024 and be substantially complete by the end of 2024.
- The contractor, which is not under contract, will generally work along one street at a time and will be wearing company uniforms.
- If your house is affected by ongoing construction, you will receive a door hanger with additional information at the start of construction. Also, you will receive an additional door hanger between 48-72 hours before the contractor mobilizes along your street and near your home.

How will my property be affected?

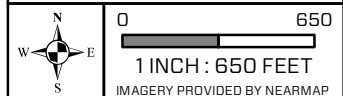
- Depending on where the sanitary sewer line is located, the repair may be in your front yard or backyard. If the repair is within your backyard, it's within an existing sanitary sewer easement owned by the District.
- The contractor may require access to your property if the sanitary sewer repair is located in an easement on or adjacent to your property.
- The work will not require residents to be home, and at no time will field crews have to enter your home or business.
- The contractor may need to dig an excavation pit to perform the necessary repair for the affected location. After the repair is completed, the site will be restored.
- Although water service will not be turned off, minimizing water use will be encouraged while the contractor performs repairs near your home.



VICINITY MAP
1 INCH = 10 MILES

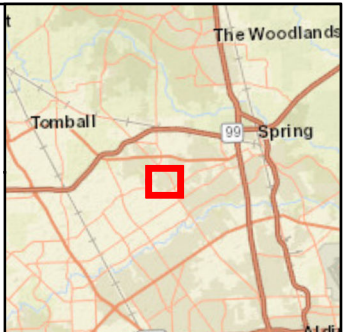
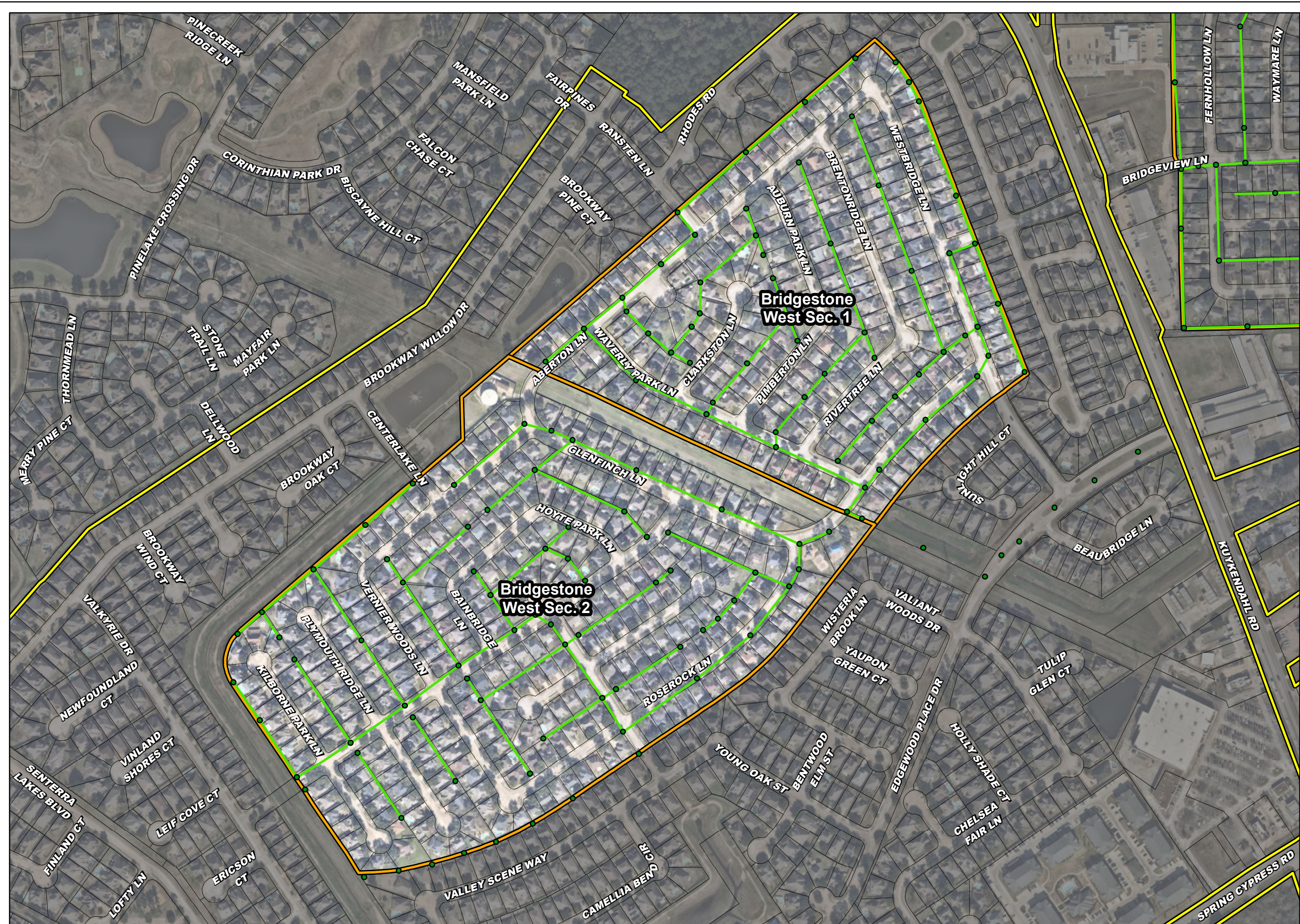
- LEGEND**
- Manhole
 - Gravity Main
 - ▭ Section Boundary
 - ▭ District Boundary
 - HCAD Parcels

Bridgestone MUD
Sanitary Sewer
Rehabilitation
BRIDGESTONE M.U.D.
HARRIS COUNTY, TEXAS



Disclaimer: This product is offered for informational purposes and may not have been prepared for or be suitable for legal, engineering, or surveying purposes. It does not represent an on-the-ground survey and represents only the approximate relative location of property, governmental and/or political boundaries or related facilities to said boundary. No express warranties are made by Quiddity Engineering concerning the accuracy, completeness, reliability, or usability of the information included within this exhibit.

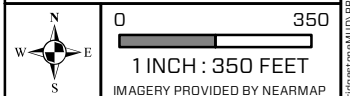




VICINITY MAP
1 INCH = 10 MILES

- LEGEND
- Manhole
 - Gravity Main
 - Section Boundary
 - District Boundary
 - HCAD Parcels

Bridgestone MUD
Sanitary Sewer
Rehabilitation
BRIDGESTONE M.U.D.
HARRIS COUNTY, TEXAS



Disclaimer: This product is offered for informational purposes and may not have been prepared for or be suitable for legal, engineering, or surveying purposes. It does not represent an on-the-ground survey and represents only the approximate relative location of property, governmental and/or political boundaries or related facilities to said boundary. No express warranties are made by Quiddity Engineering concerning the accuracy, completeness, reliability, or usability of the information included within this exhibit.

